

XCMG FOR YOUR SUCCESS



XE370CA

Hydraulic Excavator

Operating weight: 36600kg

Rated power: 190.5kW/2000rpm

Bucket capacity: 1.8m³



More Reliable and Durable

Reinforced boom

The shape of the boom has been optimized in FEM design to ensure that the load is evenly distributed throughout the entire structure. All of this, combined with increased material thickness, results in improved durability and reliability, as well as reduced component material fatigue.

Reinforced arm

The greater strength of the arm is achieved through the use of forged elements and reinforcement around the protrusions, which also increases the service life.

Reinforced bucket

The reinforced bucket is stronger and more wear resistant. There are several bucket sizes to suit different needs.

ROPS cab (ISO 12117-2) to protect the operator in the event of a rollover.

Large capacity fuel tank

Powerful turbocharger and charge air cooling system, ISUZU AA-6HK1XQP engine, net power 190.5 kW.

Improved track frame

The reinforced chassis frame was developed using the finite element method and 3-dimensional computer modeling



Working Conditions

The XE370CA is designed to work in harsh and difficult environments where more power is required. The performance of the XE370CA directly affects its performance.

More energy-saving and environment-friendly

Low fuel consumption

Isuzu AA-6HK1XQP, the output power can reach 190.5KW, better adaptability and better economy. The tuned engine power curve and low speed with high torque meet the requirements of high power output and minimum fuel consumption under heavy load.



More Efficient Return

More higher work efficiency

The power of the main pump is 2 x 320 l/min, which reduces the cycle time, while the high-capacity pilot pressure gear pump improves the efficiency of the control line.



More Comfortable and Safe

The performance of a hydraulic excavator is directly dependent on the performance of the operator. When developing the XE370CA, XCMG put the operator first. The result is significant ergonomic benefits that increase operator efficiency and safety.

Multifunction Color Display



Smart air conditioner

Easy Maintenance



Transparent visible oil-water separator

Highly efficient fuel filtration is achieved through the use of several filters, including a fuel pre-filter equipped with a water separator that removes most of the moisture from the fuel.



Air cleaner

Powerful forced air cleaner removes more than 99% of airborne dirt particles, reducing the risk of engine fouling and extending cleaning and cartridge change intervals.

For diversified construction conditions, we provide customers with

Multifunctional equipment with reliable quality and advanced performance

Greatly expanding the functions and fully extending the operation scope of the excavator, continuously to create more value and super high profit for you

Side jack hammer



Application: Cement road and concrete fragmentation, building demolition

Olecranon shear



Application: Dismantling of scrapped and heavy vehicles, steel structures such as steel plants, metals, ships, and bridges

Compactor



Application: Highway slope protection, Consolidation of dams and ditches

Quick coupler



Application: Quickly coupled with XCMG diversified attachments

Pile driver



Application: Medium and short pile projects for bridges, cofferdams wharfs and deep foundation pit support

Orange peel grab



Application: Loading and dumping of irregular and bulky materials such as scrap iron, pig iron, ore, garbage, etc

Pulverizer



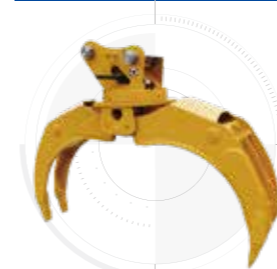
Application: Secondary crushing of concrete and separation of steel and concrete

Double cylinder shear



Application: Abandoned factory buildings, cardismantling and other projects

Hydraulic grapple



Application: Special equipment for loading and dumping wood and stone

Hydraulic pilers



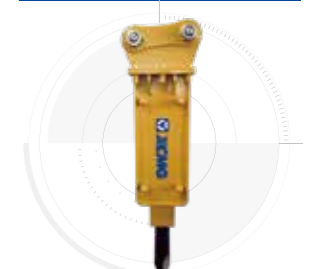
Application: Grabbing of construction waste, stone, wood and other materials

Hydraulic shear



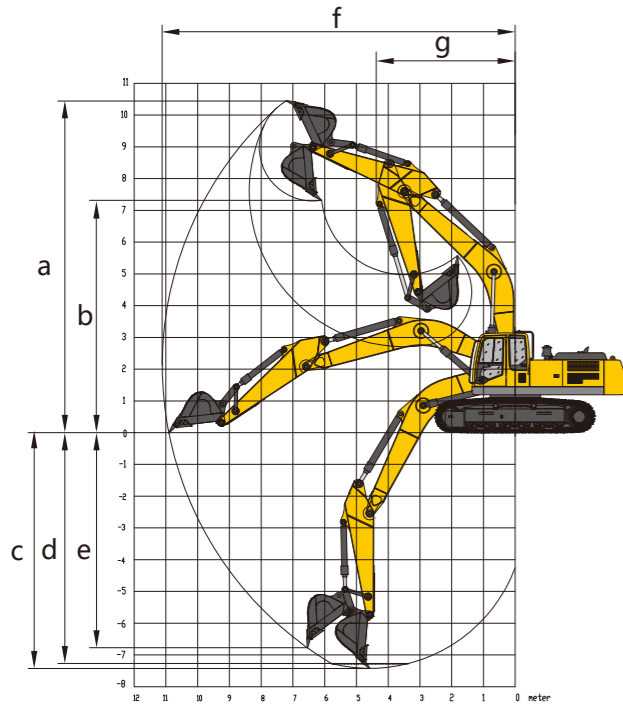
Application: Special equipment for dismantling scrapped cars and renewable resources

Top side hammer



Application: Mines, road crushing, municipal garden renovation, building demolition, reinforced concrete crushing, etc

Product Dimensions



Working range

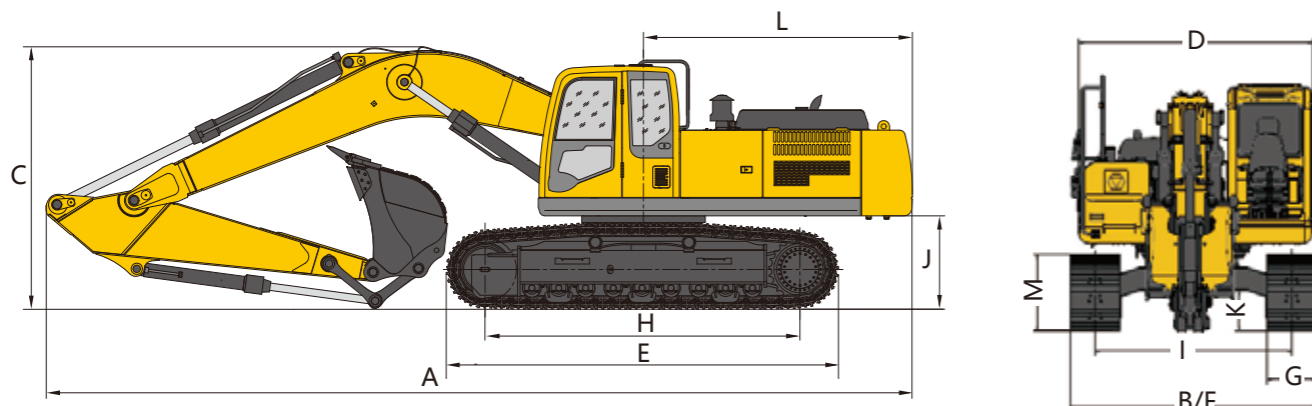
	Unit	Value
a Maximum digging height	mm	10123
b Maximum dumping height	mm	6947
c Maximum digging depth	mm	6927
d Maximum depth cut for 2240mm(8 ft) level bottom	mm	6709
e Maximum vertical wall digging depth	mm	5312
f Maximum digging radius	mm	10470
g Minimum radius of gyration	mm	4424

Appearance size

	Unit	Value
A Overall length	mm	11386
B Overall width	mm	3190
C Overall height	mm	3530
D Width of platform	mm	2950
E Track length	mm	5035
F Overall width of chassis	mm	3190
G Track width	mm	600

Appearance size

	Unit	Value
H Track wheelbase	mm	4040
I Gauge	mm	2590
J Counterweight clearance	mm	1197
K Minimum ground clearance	mm	500
L Minimum tail swing radius	mm	3570
M Track height	mm	1105



Unit	Unit	XE370CA
Operating weight	kg	36600
Bucket capacity	m ³	1.8
Engine		
Engine model	/	AA-6HK1XQP
EFI	/	√
4 strokes	/	√
Water cooling	/	√
Turbo steam	/	√
Air-to-air cooling	/	√
Number of cylinders	/	6
Engine rated power/ Engine speed	kW/rpm	190.5/2000
Displacement	L	7.79
Main characteristics		
Travel speed (high/low speed)	km/h	5.4/3.2
Swing speed	r/min	9.7
Gradeability	°	35
Ground pressure	kPa	66.6
Bucket digging force	kN	263
Stick digging force	kN	225
Largest traction	kN	285

Unit	Unit	XE370CA
Oil capacity		
Fuel tank volume	L	630
Hydraulic tank volume	L	320
Engine oil capacity	L	30
Hydraulic system		
Main pump rated flow	L/min	2×320
Main safety valve pressure	MPa	34.3/37.3
Walking system pressure	MPa	34.3
Swing system pressure	MPa	26.5
Pilot system pressure	MPa	3.9
Standard configuration		
Boom length	mm	6400
Arm length	mm	2670
Bucket capacity	m ³	1.8
Optional configuration		
Boom length	mm	6400
Arm length	mm	2900/3200
Bucket capacity	m ³	2670: 1.8R/2.1H/2.3H 2900: 1.8R/2.0H/2.1H 3200: 1.8H



Equipment name	
Engine	
Engine model	AA-6HK1XQP
Emission levels	Stage II
Auto warm up	√
Oil-water separator with water level indicator sensor	√
Radial sealed air filter	√
Air pre-filter	√
Oil bath air filter	•
Radiator dust filter	√
Il-water quick drainage device	•
Fuel refueling pump	•
Rapid fuel filling system	•
Fuel breathing valve	√
Differential air pressure indicator	√
Auto idle	√
Hydraulic system	
Boom/arm flow regeneration	√
Straight hydraulic circuit	√
Spare valve plate	√
Rotary logic valve	√
Reverse swing damping valve	√
Rotary anti-sway valve	√
Hydraulic buffer valve	•
Hydraulic oil XCMG	√
Hydraulic pipeline: Breaker and thumb pliers	•
Operation mode switch	•
Gauge pressure monitoring	√
Safety and Security Configuration	
Cab door lock and cab lock	√
Alarm horn	√
Isolation plate between engine and oil pump chamber	√
Engine emergency stop switch	•
Rear Window Emergency Exit	√
Battery circuit breaker	√
Boom and Arm Retaining Valve	√
Boom and Arm pipeline explosion-proof valve	•
Temperature alarm mode	√
Safety handrails and pedals	√
Rotating warning light	•
Anti-skid Board/Sticker	√
Hydraulic safety locking rod	√
Emergency Escape Hammer	√
Left and Right Rear-view Mirror	√
Counterweight rear view mirror	√
ROPS	•
FOPS	•
Chassis system and shield	
Track monorail guard	√
Chassis traction ring	√
600mm (24") three-rib track shoes	√
Chassis bottom sealing plate	√
Travel motor seal plate	√
600mm (24") double rib track shoes	•
700mm (28") double rib track shoes	•
800mm (31") double rib track shoes	•
700mm (28") three-rib track shoes	•
800mm (31") three-rib track shoes	•
Extended chassis	√
Lubrication system	
Boom concentrated lubrication	√
Turntable concentrated lubrication	√
Arm concentrated lubrication	√
Cab and interior	
Pressurized cab	√
Fully adjustable mechanical suspension seat	√
Adjustable seat armrest	√
Safety belt (51rm [2"] width)	√
Openable front windshield with auxiliary device	√
Front windshield split according to 70x30 ratio.	√
Double-layer laminated windshield and other tempered windows	√
Sliding upper window of door.	√
Two-way air outlet air conditioner with defroster (automatic type) (pressure function)	√
Color LCD display with warning message, filter/fluid change information and working hours	√
Operating handle	√
Driving control pedal with detachable manual joystick	√
Two stereo speakers	√
Beverage cup holder	√
Coat hook	√
Washable floor mats	√
Extension-type safety belt (51rm [2"] width)	√
Fire Extinguisher.	•
Air conditioning system.	√
High and low speed shift	√
One-click boost mode	√
Reserved switch for work auxiliaries	√
Sunshade	•
Top skylight	√
Intermittent multi-speed wipers	√
Cup holder, file bag.	√
Radio	√
Electric System	
Storage battery (2×850 CCA)	√
70A AC starter motor	√
7.8 kW starter motor	√
Walking alarm	•
12V Cigarette lighter	√
24V Cigarette lighter	•
5V USB connector	√
12V power interface	•
Working device	
Bomm 6.40m	√
Arm 2.67m	√
Strengthened bucket 1.6m³	√
Arm 2.90m	•
Arm 3.20m	•
Rock bucket 1.8m³	•
Strengthened bucket 1.8m³	•
Strengthened bucket 1.9m³	•
Eathwork bucket 2.1m³	•
Lighting lamp	
Left and right arm working lights.	√
Right side work light mounted on storage compartment	√
Interior lighting of cab	√
Cab roof mounted front work lights	•
Cab roof mounted rear work light	•
Technology	
XEICS intelligent control system	√
Data link socket	√
Counterweight	
7.2 T counterweight	√
7.7 T counterweight	•

√ - Standard configuration • - Optional

